



**PANKHURST
TRUST**

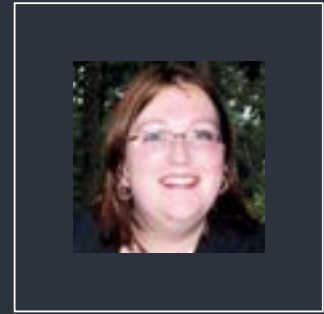
OUR IMPACT IN A COVID WORLD

ANNUAL REPORT 2020/2021





CHAIR'S REPORT



I don't think anyone will be surprised to hear that it's been a busy, and sometimes challenging, year for the Pankhurst Trust. The legacy of the COVID Pandemic continues to impact on daily operations and the lives of the women and girls we support, our staff, friends, stakeholders and volunteers. That said, I am immeasurably proud of the work of The Trust as it responded and changed since the end of March 2020. We've delivered more flexible working, found creative ways to support women remotely and safely, and the Board of Trustees moved (almost) seamlessly into virtual meetings.

We were all saddened to have to close the Pankhurst Centre and the museum to the public, especially after the significant strides we had taken to increase the reach and impact of the Suffragette legacy during 2018. However I am equally pleased that whilst the doors were closed we have been busy, with the support of our generous donors, transforming the museum experience, so watch this space.

It has been a privilege to lead the Pankhurst Trust during these tumultuous times and I am confident that, as I step down as Chair and assume a new role as an independent member, the Trust's new Chair will find a highly skilled and deeply committed team to take forward our mission.

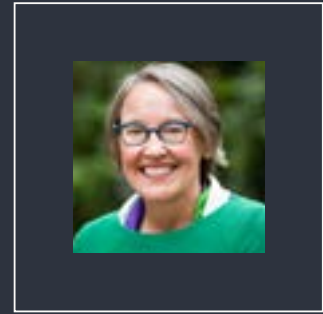
The Trust has been a big part of my life over the last seven years. Over that time, we have grown significantly in size, staff numbers and turnover, allowing us to provide support to even more women and girls from across Manchester and beyond.

The Trust is a formidable organisation, one capable of making change and standing up for women experiencing domestic violence and abuse. I will miss you all.

Louise Sutherland

A handwritten signature in white ink that reads "Louise Sutherland". The signature is written in a cursive, flowing style.

CEO'S REPORT



Reflecting on this year of all years has brought many emotions to the surface for me as a leader of this powerhouse of a charity.

Pride in our staff and volunteers for their determination that no-one was turned away, their resilience working from home in less-than ideal circumstances and for the compassion and support they have and continue to show each other.

Respect for the courage of victims locked into abuse and for their patience with us as we learned how to respond to their needs in a digital world

Gratitude for our partners and funders whose trust allowed us to adapt as we learned more about the virus and how best to keep infection rates to a minimum.

And Joy, yes joy, for the babies born into safety, for the children who sang, danced and giggled their way through the online activity sessions and for the knowledge that this place, our place, is a place where we can all belong.

Gail Heath

A handwritten signature in white ink that reads "Gail Heath".

OUR VALUES

In 2019 our staff, volunteers and clients took time to reflect on who we are and **what our best looks like**. What we found was that the reason we do what we do depends on **our individual, and collective, determination to be :**

- **Courageous** – challenging inequality, stepping forward and making change.
- **Generous** – sharing our skills, creating energetic positive links, and thriving together.
- **Affirming** – supporting and inspiring, paying attention to discover what matters.
- **Rooted** – secure in our communities, participating and nurturing a sense of belonging.

These values have and will continue to guide us in everything that we do and never have they been more tested than during the year of this report.

ABOUT US

A women-led feminist organisation which exists to :

- Protect and restore the heritage, history and architecture of 60-62 Nelson Street, birthplace of the Women's Social and Political Union founded by Emmeline Pankhurst, and to ensure that the powerful story of the women who won the vote continues to inspire those who dare to challenge gender inequality and the violence and social injustice this fosters.
- Work to ensure that people suffering, or at risk of, domestic abuse receive appropriate support. We will do this by providing safe accommodation and other services and by working in partnership with other agencies.

We believe that our work, and continuing focus on the needs of women and girls is vital given the unequal legal, social and cultural environment in which women and girls in particular live, work and grow continues to affect their status in all areas of life in society, whether public or private, in the family or the labour market, in economic or political life, in power and decision-making.

We recognize the intersectional nature of discrimination, in that it is not only differences between identities (such as racial, gender, and LGBT+ identities) but within these that contribute to marginalisation and oppression. We want to change this to ensure women have equal and fair representation at every level of our society.

And this is why, whilst many of our services are available to women and men, we recognise and accept that discrimination means some people may have not had equal access to services or employment and we support the view that it may be necessary to develop or create some services or opportunities to specifically meet different needs, including the specific need for single sex services.

In providing our services PTMWA seeks to ensure that no one is unlawfully discriminated against on the basis of their protected characteristic but reserve the right to use the services and employment exceptions as a proportionate means to achieve a legitimate aim in line with the Equality Act 2010.

As with the rest of the world, we were rocked by the Covid-19 pandemic but this report serves to show what can be achieved when strong women are courageous, affirming, generous and rooted.

MWA STATISTICS

We provided safety advice and signposting to support services for **3711 victims of Domestic Abuse (DA)**, a 30% increase from 2019-20. **1574 went onto choose MWA** to support them to live their lives free from the fear of DA.

In our services, over a third of our clients (44%) were from BAME groups, including mixed/ multiple ethnic background, Asian/Asian British, Black/ African/Caribbean/Black British and Arab. 5% were from White non-British ethnic groups, including Irish, Traveller and Eastern European.

21-35 year olds made up 49% of our accepted clients, with 34% aged 36-50 and 12% over 50.

Overall, 4% of our clients identified as LGBTQ+. 17% of all clients disclosed a disability, including physical (5%), learning (1%), hearing (1%), visual (1%) or mental health (11%).

In 2020-21 we had 60 children referred to our services, 53 of which we directly supported.

The biggest age group of children supported was 6-10 (44%). 20% were aged 0-5, 24% aged 11-15 and 11% aged 16-25. 26 of the children were female, 26 were male and 1 was intersex.

Overall, 1% of these children identified as LGBTQ+. 7% of all clients disclosed a disability, including physical (4%) and learning (4%). 65% of these children were from BAME groups, including; mixed/ multiple ethnic background, Asian/Asian British, Black/African/Caribbean/Black British.

We took 3088 calls on the referral line. An increase in calls for donations and general advice with 50% of calls coming direct from service users.



WHAT WE DO

- FIRST CONTACT**
- MWA COMMUNITY**
- SPECIALIST INTERVENTION**
- INTENSIVE SUPPORT**

We are specialists in what we do and skilful in identifying and working with others who share our commitment to meeting the needs of the whole person.

Our highly skilled staff are supported by a strong network of committed volunteers, a unique collection of diverse people, who contribute to making The Pankhurst Centre and Manchester Women's Aid the safe, nurturing, and life-enhancing spaces where Women and Girls thrive.

FIRST CONTACT

Our first contact, accessible to all, focus on intervening early to prevent harm and raise awareness.

Helplines

Drop-in

Welfare Support

Training

Our referral line is the "front door" for people seeking support and we were delighted to secure funding from the Ministry of Justice and CAF Bank for a dedicated worker. This enabled us to take 30% more referrals than in 2019-20 and gave capacity to our existing staff to provide additional support such as food parcels, move-on grants and digital inclusion to clients.

MWA COMMUNITY

Our MWA community-based domestic abuse services focus on reducing social isolation, safety planning and increasing civic engagement.

Groupwork

Volunteering and coaching

Events and workshops

Counselling

Due to the ongoing COVID-19 pandemic, our much needed group work service was suspended in April 2020 and we developed COVID-19 Group Work Measures. With funding from the National Lottery Community Fund we were able to move our much-needed group work online and provide clients with tablets and Wi-Fi to enable full inclusion. COVID-19 Group Work Measures reflect the effort the organisation is putting into our work to help women despite challenging times. Whilst it has been hard to keep up with the demand, we are proud to have had 278 referrals to COVID-19 Group Work measures and supported 138 women.

Volunteers play a crucial role in our organisation, supporting our services. During the COVID-19 pandemic, our heritage volunteering opportunities were suspended, however some volunteer roles were able to continue remotely, such as our phone buddy service. In 2020-21 we had 70 registered volunteers with over 3000 hours of volunteering hours logged. This was vital in helping us continue our support of vulnerable women and families.

As well as having volunteers across all services, we have three distinct volunteering services:

Queen Bee Coaching (QBC)

Our Queen Bee Coaching service provides a high quality coaching opportunity delivered free by experienced coaches to diverse emerging female leaders faced with social and economic inequalities. 2020 was the third year of operation. The service, including one to one coaching, group development and other initiatives became on-line when the pandemic began and has continued to grow and extend to more women throughout the pandemic. During the lockdown, a series of webinars were delivered – Radical Thinking for Radical Times – organised by QBC, in which leading feminist writers discussed their writing and leadership, attracted hundreds of women, with a national and international audience and a second inspiring series with leading women's athletes drew a similar but different audience.

Heritage

Over the last year, the heritage staff have continued to work closely with the volunteer team despite the challenges of furlough and remote working. Volunteers have consulted with the Pankhurst Centre heritage team and exhibition designers, Mather & Co, in the creation of the now completed At Home With The Pankhurst Family exhibition. This included zoom consultations and a digital survey. A group of volunteers formed a research group compiling information about Edwardian Manchester and the background to the rise of the Suffragette movement giving context to our new exhibition. Two volunteer students have also completed placements with us helping with volunteer handbooks and museum trail planning for primary school visits.

MWA Counsellors

Our Volunteer Counsellors provide 1-1 counselling for Manchester Women's Aid clients, building a relationship of trust and respect. This support changed during the pandemic, with sessions moving online using zoom or phones. Continuing the support for our clients was crucial and an average 10 sessions were provided to each client by our Volunteer Counsellors over the last year.

WHY WE DO IT

One client fled after a short relationship became emotionally and physically abusive.

In financial hardship, she did not have the means to set up home. After being referred to MWA, her daughter was able to have emotional support and guidance through our children's services.

The woman undertook 1:1 sessions around building confidence, self-esteem and self-care.

This encouraged her to contact her GP regarding mental health services and gave her an increased understanding of domestic abuse and is better able to manage her safety.

“I finally feel like
I can be a mum to
my daughter again”

SPECIALIST INTERVENTION

INTENSIVE SUPPORT

Our specialist domestic abuse services focus on increasing the safety, health, wellbeing and confidence of survivors.

Health and Wellbeing

Community-based outreach

Children and young people's services

Mentoring and vocational

Our intensive support domestic abuse services are focused, quite simply, on providing immediate access to life-saving support and rebuilding shattered lives.

Independent Advocacy

Emerge Refuge

Big Manchester

BeActive Manchester

Our Emerge Refuge services continue to be delivered, throughout the pandemic. In 2020-21, received a total of 227 referrals to our Refuge, of these 148 enquires were made when the refuges were full. Overall, we were able to move 57 women and 36 children out of their abusive situation and into safe accommodation. And despite the myriad challenges of resettling clients during the pandemic, with the support of our volunteers and We love Manchester we were able to move 49 women and 30 children on from our safe accommodation into their own accommodation.

Our child-led play service started up again in September after being temporarily suspended, however they continued to be impacted by the tier 3 and 4 restrictions and lockdown. The ongoing pandemic continues to impact and sessions are now run 1:1 rather than in groups. 2020-21 there were 64 play sessions with 102 children. Our service, Be Active Manchester quickly responded to covid-19 restrictions changing to remote delivery and providing tech to families in need. They continued with 1-1 and group sessions for parents and children throughout fluctuating covid-19 restrictions.

“I will be forever grateful to everyone at MWA for saving our lives”

This year our Identification and Referral to Improve Safety (IRIS) project completed training on all 85 GP practices in Manchester. This training helps staff spot signs of domestic violence and abuse, providing a simple referral pathway so patients can get the help they need quickly. By working alongside doctors and their staff, we're able to have a greater reach with our work.

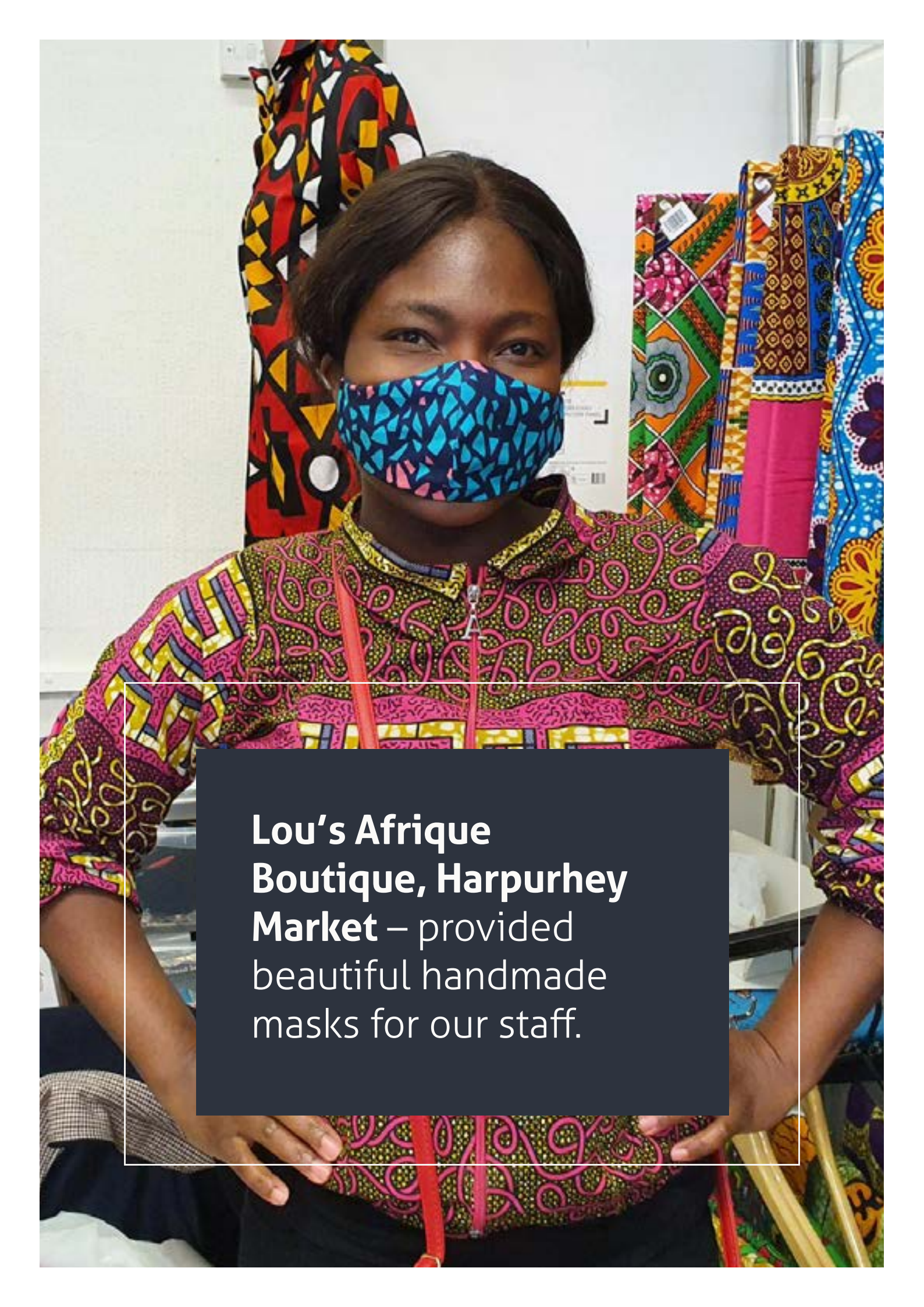
WHY WE DO IT

Client X came into refuge with her daughter, she was deeply distressed and had suffered horrendous physical and emotional abuse. She found it difficult to engage as she didn't trust anyone. Our workers completed a toolkit with her, worked with her around education on safe sexual relationships and put in place a debt plan. This improved her confidence and she began to talk. We helped her move on from the refuge and settle in her own accommodation.

“If it hadn't been for refuge, [I'm] not sure where I would have ended up, probably dead.”

PANKHURST CENTRE

The Pankhurst Centre was closed to the public for the whole of 2020-21 in line with Government regulations but was far from inactive.

A woman with dark hair is wearing a vibrant, patterned face mask and a matching patterned top. She is standing in front of a display of various colorful fabrics and masks. The background shows several pieces of fabric with different patterns and colors, including red, yellow, black, and blue. The woman is looking directly at the camera with a slight smile.

**Lou's Afrique
Boutique, Harpurhey
Market** – provided
beautiful handmade
masks for our staff.

The Pankhurst Centre became a hive of activity – socially distanced, of course - to support the MWA business by :



- Providing extended space and support to Sheikh Nazim Helping Hands foodbank charity.
- Acting as a hub for donations of furniture and furnishings for distribution to 57 women who moved out of refuge and into their own homes.

The Centre itself underwent building improvements and the Heritage team were hard at work remotely delivering on a large-scale, whole-museum reinterpreted project.

Staff, aided by our fantastic volunteers, researched content and then wrote and edited copy for the exhibition. They worked with Mather & Co to produce the content and organise the install.

In addition, we had two MA students on placement work and we undertook consultation with schools and young people in order to develop our offer.

Heritage activity will return to the Centre in 2021 with the launch of the brand new exhibition. There will be interactive displays, an immersive AR experience, space for reflection and, of course, the all-important café offer. We are excited to move towards this new period in the life of the Pankhurst Centre.





Working Woman

Research was a defining experience of work for women and men in the early 20th century.

As a woman, research is a professional skill. Research is the foundation of the work of a woman, and it is the only way to ensure that the work is done well.



"I was always anxious to have outside work. Women are the better and the happier for occupation; it makes them socially and intellectually"

Elizabeth Peabody

Elizabeth Peabody 1802-1867





Radical Manchester

The city in which Elizabeth Poulton and her family gave up on a radical city, that depending on a variety of factors, some Manchester were able and finally left.

Radicalism challenged the status quo and sought to improve working and living conditions.



Elizabeth Poulton

Elizabeth Poulton



Elizabeth Poulton

Elizabeth Poulton



The Daily Mirror
FRIDAY, 22ND MARCH 1913
SUFFRAGETTES
BATONED BY POLICE

Evening News

SUFFRAGETTES
MANCHESTER



Emmeline and Christabel's Activism

Emmeline and Christabel were the charismatic leaders of the Women's Social and Political Union (WSPU) - the movement that became known as the suffragettes. Notorious in their day, they were admired by supporters, and hated by their critics.

From Cambridge she had a brilliant education and was one of the first women to graduate from the University of Cambridge in 1892. She was a member of the Cambridge Footlights Club and the Cambridge Dramatic Society. She was also a member of the Cambridge Women's Suffrage Society and the Cambridge Women's Social and Political Union.

A MEETING OF WOMEN
Will be held in the
ST. JAMES' THEATRE,
ST. JAMES' G.W.
(by kind permission of Mr. GEN. ALEXANDER)
On **TUESDAY, MAY 26th,** at 3 o'clock
ON THE
ENFRANCHISEMENT OF WOMEN
Chairman - Mrs. PANKHURST
VOTES FOR WOMEN

SUFFRAGETTES
PELTED
BY POLICE



Adela's Activism

Adela was the first woman to be elected to the House of Commons in 1919. She was a member of the Women's Social and Political Union (WSPU) and the Women's Freedom League (WFL).

HANDICAPPED!

Women currently make up only 18%
of government ministers



and 24% of parliamentarians globally.



THE SUFFRAGE
MARCH 1913

FINANCE

Funding for domestic abuse services became a priority during a year of lockdowns and restrictions and we were fortunate to secure additional funding of £460k to support our clients, volunteers and staff through this time.

Total income reached £2.4m, the highest it's ever been, and this made such an incredible difference in the most difficult of times.

Even if we remove the short-term grants from this, our growth is 23% on 2019-20 and an amazing 57% increase in the past 5 years.

PLANS FOR 2021-22

Our plans must take account of the impact of the COVID-19 pandemic. As we look ahead we have to build on our survival during COVID-19 and continue to meet the increased demand for our specialist support.

- Domestic Abuse Bill: – we are waiting for the Domestic Abuse Bill to go through the final stage of Parliament and the opportunities and challenges it will bring to the organisation to provide the change domestic abuse survivors need.
- We look forward to re-opening the Pankhurst Centre with a brand new exhibition and welcoming back visitors and activists.
- Work with partners towards ending violence against women and girls.
- Continue to invest in our staff and provide more development opportunities.
- Continue strengthening our partnerships and networks at Manchester and Greater Manchester level.
- Acquire more properties to provide safe Refuge accommodation.
- Respond to challenges in the job market by piloting our exciting new Rise project which will enable more women with the behaviours and values we need to provide quality and safe services work in the domestic abuse sector.
- Increase the capacity of our referral line, extending our hours to 9.30am -7pm to accommodate workers and increased demand.

GET INVOLVED

We anticipate huge expansion for 2021-22, visit our jobs page for current and upcoming opportunities.

www.pankhursttrust.org/get-involved/jobs

VOLUNTEER

We welcome volunteers and are currently looking for help with heritage, admin, group work, drop-in and driver roles.

www.pankhurstvolunteers.teamkinetic.co.uk/index?newRegistration=true



DONATE

We would like to thank all our donors, friends, and volunteers.

Without their support, we could not carry out our mission of upholding the Pankhurst legacy and continuing the fight for gender justice.

By donating to **The Pankhurst Centre**, you can be part of the incredible story of the women who won the vote and help us to secure the future of the museum and heritage centre so that we can inspire generations to come.

A donation to **Manchester Women's Aid (MWA)** could change the life of somebody affected by domestic violence and abuse. Our life-saving, vital services rely on the kindness of donors like you.

For more information on the different ways to support our work, including how to make a donation or fundraise on our behalf, please visit our website.

www.pankhursttrust.org/donate

THANK YOU

We couldn't have done any of this
without the following supporters :

AJ Bell

Amazon .co.uk

BBC Children In Need

Biffa History Makers

Caf Bank Resilience Fund

European Social Fund / Workers
Education Association

Greater Manchester Combined
Authority

Greater Manchester Police
- Aris Funding

Lankelly Chase Foundation

Leathersellers

Lyons Trust

Manchester City Council Public
Health

Manchester City Council

Manchester Young Lives

Ministry of Housing, Communities
and Local Government

Ministry of Justice

National Lottery Community Fund

National Lottery Heritage Fund

NHS Central Manchester CCG

Oglesby Charitable Trust

The River Charity

Sheil Nazin

Sport England

Unicorn Grocery

Wavemaker

We Love Manchester

The Pankhurst Trust (Incorporating Manchester Women's Aid) (PTMWA)



**PANKHURST
TRUST**



Three year accreditation by SafeLives



We are registered in England and Wales as a company limited by guarantee, no. 6726553.
And a registered charity, no. 1126433

Our registered address is:

**Pankhurst Centre
60 -62 Nelson Street
Manchester
M13 9WP**

KEEP IN TOUCH

www.pankhursttrust.org

Visit our website, join our mailing list
and follow us on social media.



@ThePankhurst
@manchesterwomen'said



@MancWomensAid
@PankhurstCentre



@pankhurstcentre

